



Blackbird Mini Design Luminaire

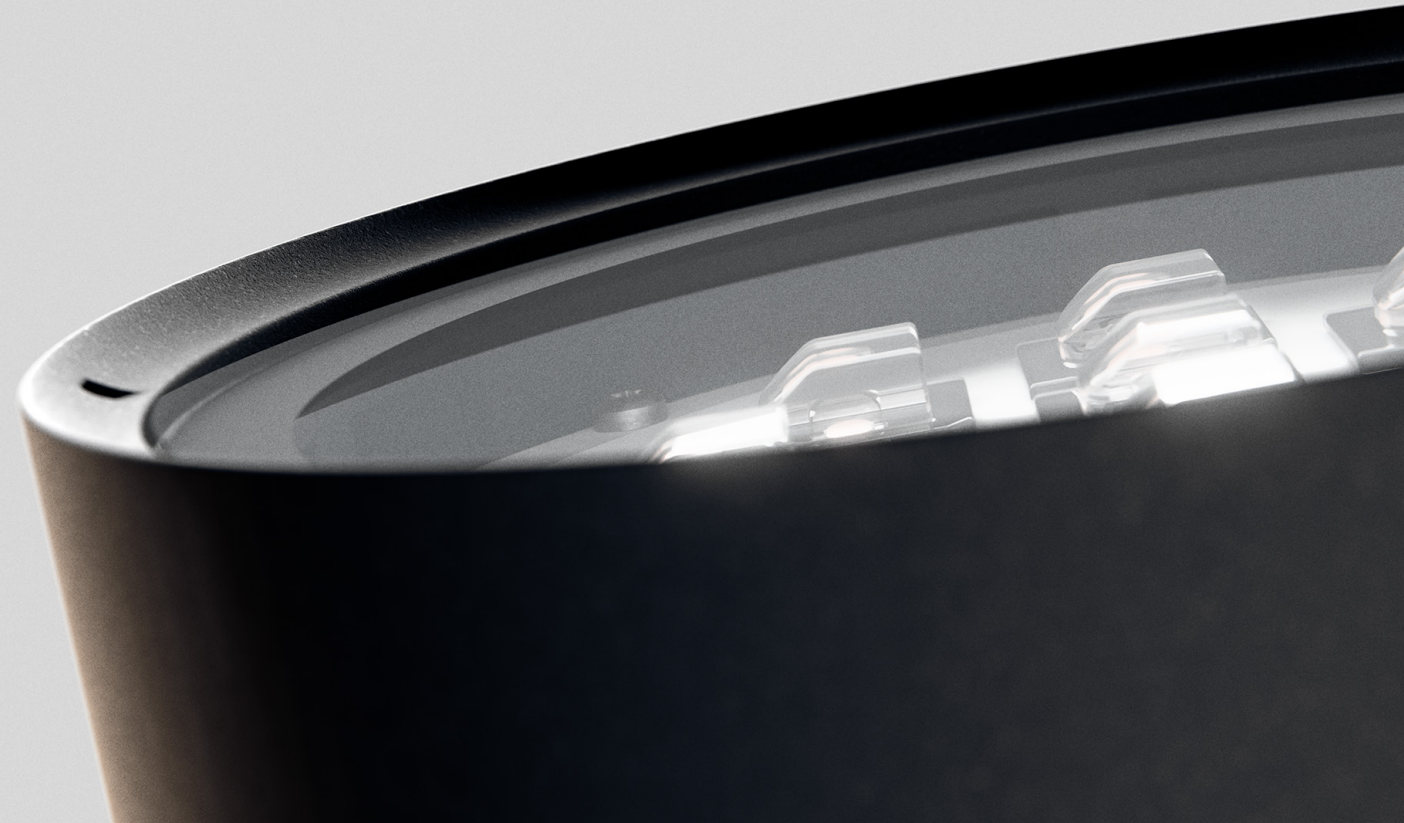
The original Blackbird quickly became a favorite - its clean lines and timeless design, that is distinctive yet never out of place, make it a natural fit in any architectural environment.

With the Blackbird Mini, we took it even further. Through a thoughtful process, we removed everything unnecessary, refining even the smallest details to the highest standards. We blurred the lines between pole, bracket, and luminaire until they flow as one. The result? Not just a smaller version of something great, but a luminaire that is adaptable, iconic, and instantly recognizable.



Recessed optical elements prevent glare and increase overall comfort.

Drainage holes have been implemented to allow the luminaire to be positioned upwards, preventing water ingress.





Blackbird Mini offers full 360° horizontal rotation and an adjustable tilt range from 50° to 120°, ensuring precise directional aiming and optimal illumination from any position and onto any surface.

Secure the two-piece body with hidden screws.





The Blackbird Mini Spot Bracket version ensures freedom in luminaire placement on the pole. Whether it's one or five luminaires, asymmetrical or symmetrical alignment, the bracket version will realize any imagined combination - most importantly, by shedding light where it is most needed.

Blackbird Mini Spot Bracket Mount





The Flange version is meant for those who prefer simple mounting, as well as a unique design feature. This mounting bracket's design won't leave anyone indifferent. Blackbird Mini Spot Flange can be mounted on poles from $\varnothing 60$ to $\varnothing 76$ mm, with adjustable angles for precise illumination.

Blackbird Mini Spot Flange Mount



Compatible with ø 60 / 76 mm poles



Blackbird Mini Facade is the family's most universal luminaire. Mount it to the wall to use it as a downlight or uplight, or mount it on the ground surface to illuminate any desired object by simply adjusting the angle of the luminaire's body.

Blackbird Mini Facade Mount



Optics, accessories



↑

Various optical features are available to change the light. Choose between Honeycomb or Honeycomb Lens to reduce glare and light spread.

Choose a White PCB for brighter illumination, or a Black PCB for a sleek, modern look that blends effortlessly into a minimalist luminaire design. Select Matt Glass to increase visual comfort by diffusing light and creating a uniform glow.

→



↑

White PCB

↑

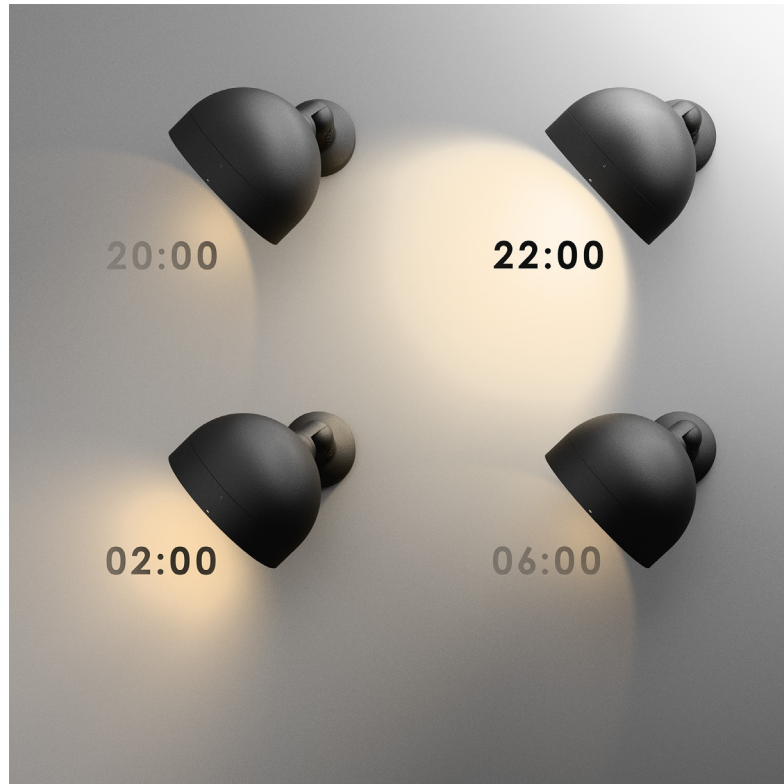
White PCB with
Matt Glass

↓

Black PCB with
Matt Glass

↓

Black PCB



A unique Zhaga expansion accessory has been designed to visually complement the luminaires and enable management of the lighting. Or choose DALI to control individual lighting fixtures digitally, reducing energy consumption and benefiting the environment.



Technical information

V	198 - 264
Hz	50 - 60
W	Up to 30
lm	Up to 3900
lm/W	Up to 130
K	1800 / 2200 / 2700 / 3000 / 4000
°C	-40 up to +50
CRI	>70 / >80 / >90
Body:	Die-cast aluminum
Dimming:	DALI / 1-10 V / Midnight dimming / Step dimming / Mains dimming
Initial chromaticity:	MacAdam 5
Lifetime:	Up to L98B10 (100 000h) at Ta = 25 °C
Warranty:	5 years
Installation:	Pre-wired cable 30 cm
Spigot:	On ø 60/76 mm pole / on wall
Socket:	External Zhaga Top and Bottom
Surge protection:	4 / 6 / 10 kV
Corrosion protection:	Up to C5



↑
Grey

Black
Sand →



↑
White

←
Dark
Bronze

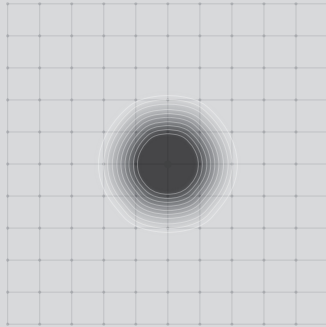
Other colors available on request

Photometry

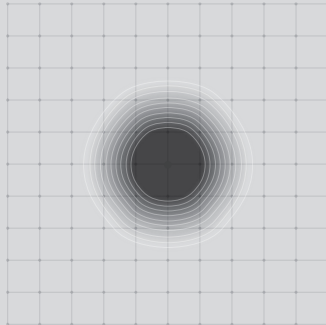
Various laboratory-tested optical options are available.

Choose between symmetric, narrow, and wide beam options to illuminate objects, paths, and different areas - or to create accent lighting.

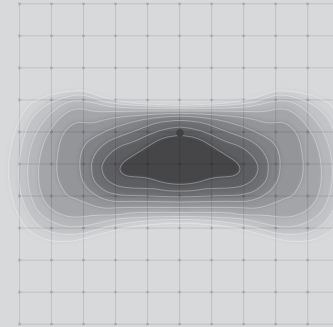
QE2 - Type V - VS - 15°



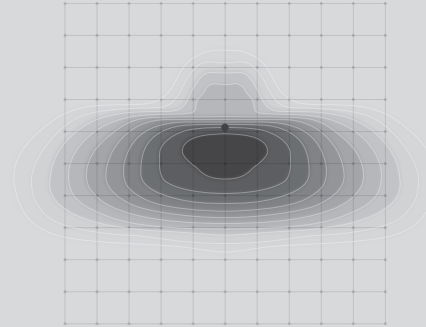
QE1 - Type V - VS - 30°



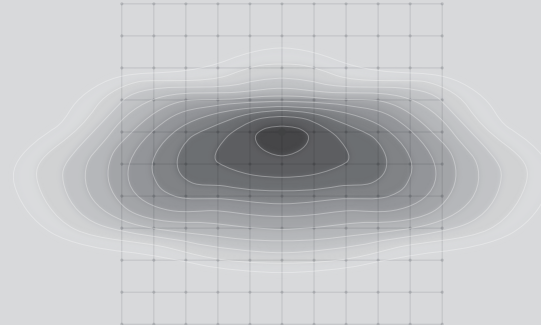
Z06 - Type II - S



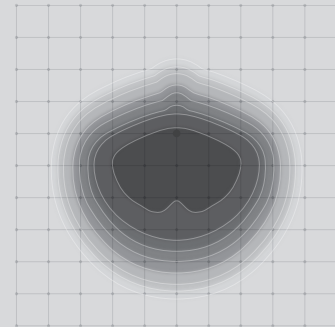
Z39 - Type III - M



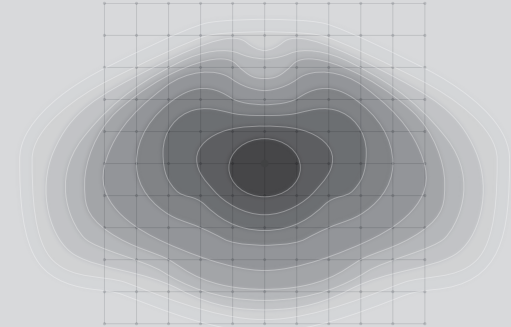
Z22 - Type III - M



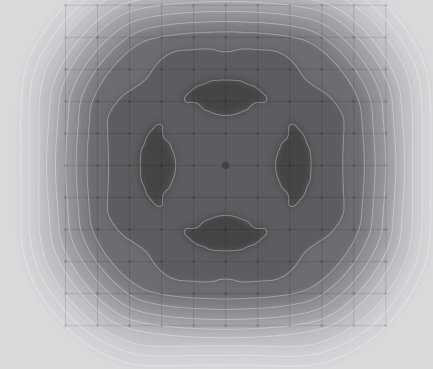
Z35 - Type IV - M



Z21 - Type I - M



Z20 - Type V - VS



Applications



