

vizULO



INTERIOR

About us

VIZULO is an energy-efficient lighting solution company, established in 2012, specializing in street, territory, commercial, industrial, and architectural LED lighting. VIZULO stands for beautiful product design, high technical parameters, and excellent quality. With great new and existing products and ongoing projects, the company keeps expanding its business and creating new solutions for municipalities and entrepreneurs to create better and safer lighting for people and the environment. VIZULO has grown rapidly – there are 140 people working today in VIZULO group and our lighting products are exported to 43 countries all over the world.



Sustainability and social responsibility

VIZULO has merged Integrated document management and registered information systems, performed the assessment, and has verified compliance and approved its:

- Quality management system according to ISO 9001:2015 standard,
- Environmental management system according to ISO 14001:2015,
- Occupational Health and Safety Management System according to ISO 45001:2018, and
- Energy management system according to ISO 50001:2018 standard.

Vizulo has performed the assessment and has verified compliance with legal and other requirements binding on the company concerning environmental management and the packaging process. The environmental aspects of the company's activities and tasks, and goals are defined. Only organic and recyclable cardboard and paper packaging is selected during the operating processes of the company Vizulo and avoids as much as possible unnecessary use of packaging.

Vizulo provides its employees with a safe, healthy, and safe working environment and all social guarantees by respecting the principles of non-discrimination and equality. Every employee of Vizulo has the opportunity to participate in the improvement and organization of their work environment and safety. The company premises are built and equipped according to the highest safety and energy-saving standards.

In 2021 Vizulo have introduced the Product life cycle assessment system (LCA and EPD), which assess environmental impacts from raw material extraction and processing (cradle), through the product's manufacture, distribution, and use, to the recycling or final disposal of the materials composing it (grave). Life Cycle Assessment (LCA) is defined as the systematic analysis of the potential environmental impacts of products or services during their entire life cycle. The Environmental Product Declaration (EPD) report tells a product's life cycle story in a single, comprehensive report.

Also, Vizulo products comply with Ecodesign and Energy labeling regulations. Each product has its product page with detailed technical characteristics (luminaire ecodesign) and an energy label (energy labeling). Data from the EPREL database is available to consumers and market surveillance specialists.

Quality management

All VIZULO products are manufactured in Latvia, research and development of high-quality products are the priority of the company. Quality management for us is the act of closely overseeing all activities and tasks needed to maintain a desired level of excellence. VIZULO employs hi-tech automated electronic production lines – high-speed surface mount technology line and selective soldering line. This gives great flexibility in specific LED module development and custom-made production just as a possibility to produce any other electronics devices – like surge protection devices and different smart sensors.

Our management



“ In the beginning, I thought Vizulo would be delivering lighting solutions to ensure the highest energy efficiency for our clients. Nowadays, we use different types of sensors and smart lighting management systems to distribute light where and when it's needed. So, in a curious way - these solutions are often more about darkness than light!

— Jānis Zeltiņš Chief Executive Officer



“ When we first started – as a team of 10 people in 2013 – we decided that the core values of Vizulo would be flexibility, passion to win, speed, quality, design, and innovation. Standing by these values allowed us to grow, realizing largest street lighting modernization projects in Northern Europe.

— Linda Zeltiņa R&D director

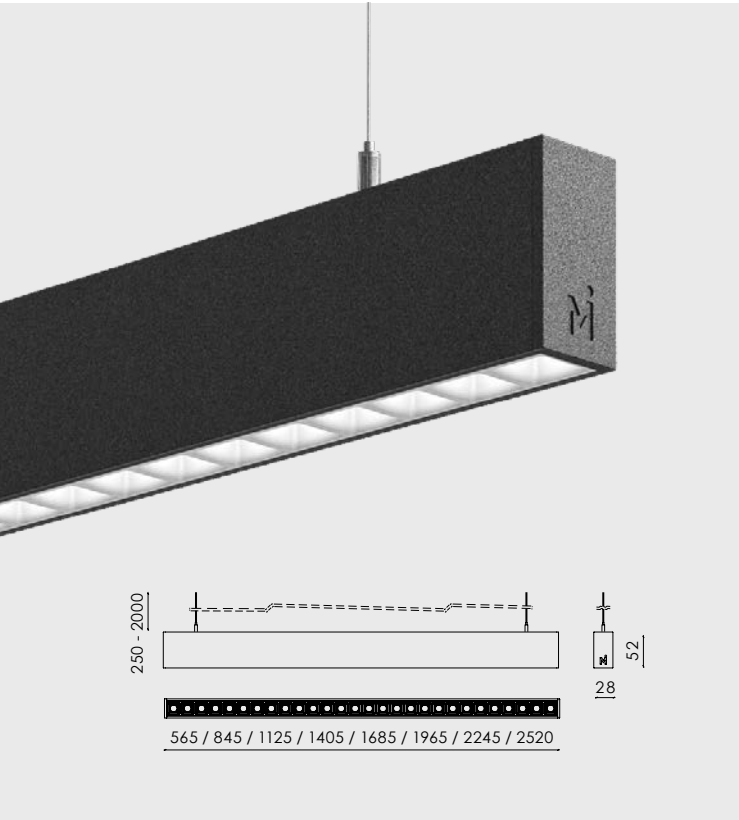
Certificates



Milzo Number 1

RAL9005
RAL9016
RAL9006
SANDED ALUMINIUM

Other colors on request



SUSPENDED

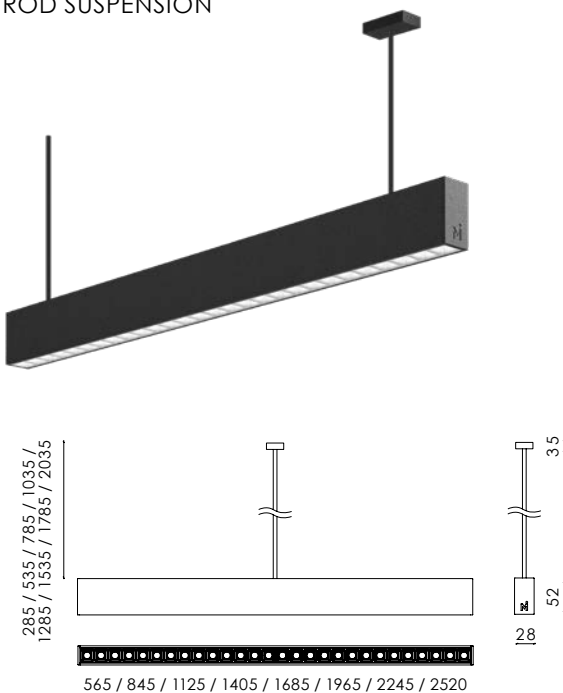


Body:	Aluminium profile
Dimming:	DALI / Bluetooth / Non dimmable
Power:	12 - 90 W
Voltage:	220 - 240V
Standard LED CRI:	>80 / >90 / >95
Sun-Mimic LED CRI:	>90 / >95
Color temperature:	3000 / 4000 / TW 2700 - 6500 K*
Lifetime:	100 000 h (L80B10) at Ta = 25 °C 50 000 h (L90B10) at Ta = 25 °C
Temperature °C:	+10 to +35
Warranty:	5 years
Optics:	PMMA optic / PC shade
Uplight/Downlight:	Opal / Microprismatic / Symmetric / Asymmetric
Mounting:	Surface / Suspended / On Rod
Human Centric Lighting:	Available

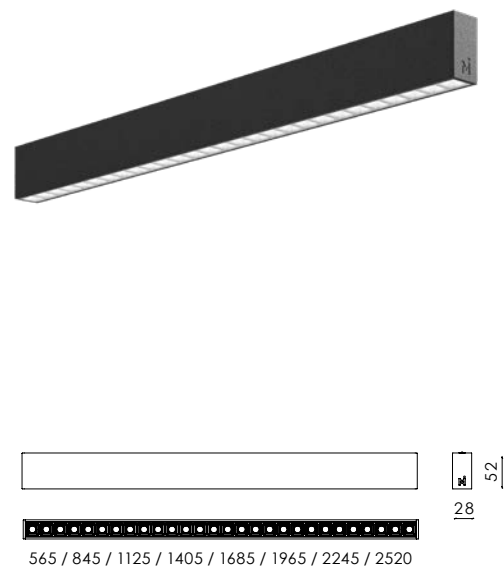
*Other CCT available on request

ADDITIONAL MILZO NUMBER 1 MOUNTING

WITH ROD SUSPENSION



SURFACE

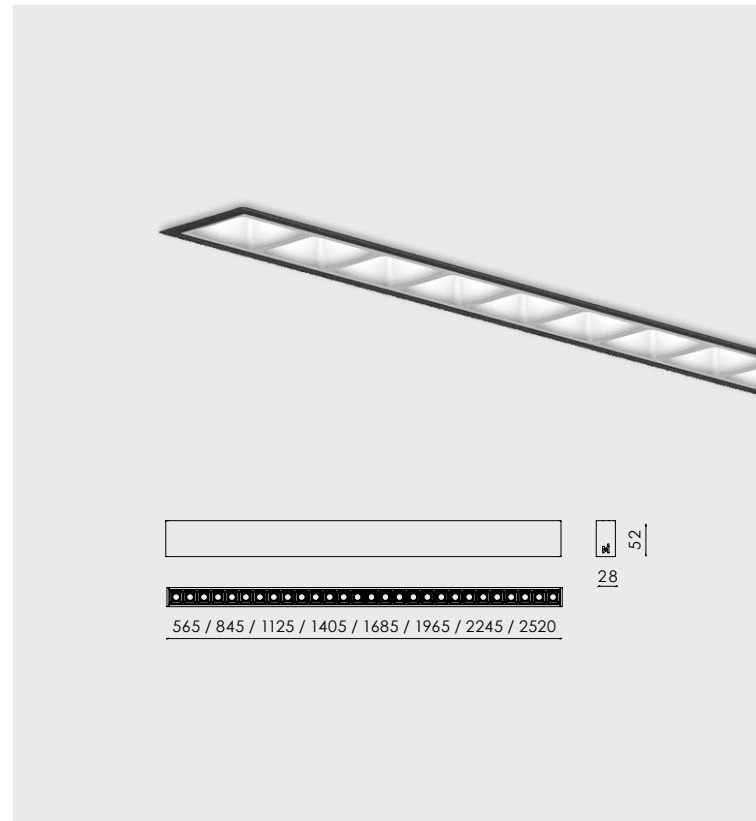


RECESSED

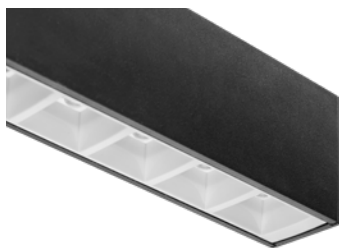


Body:	Aluminium profile
Dimming:	DALI / Bluetooth / Non dimmable
Power:	12 - 90 W
Voltage:	220 - 240V
Standard LED CRI:	>80 / >90 / >95
Sun-Mimic LED CRI:	>90 / >95
Color temperature:	3000 / 4000 / TW 2700 - 6500 K*
Lifetime:	100 000 h (L80B10) at Ta = 25 °C 50 000 h (L90B10) at Ta = 25 °C
Temperature °C:	+10 to +35
Warranty:	5 years
Optics:	PMMA optic / PC shade
Uplight/Downlight:	Opal / Microprismatic / Symmetric / Asymmetric
Mounting:	Recessed
Human Centric Lighting:	Available

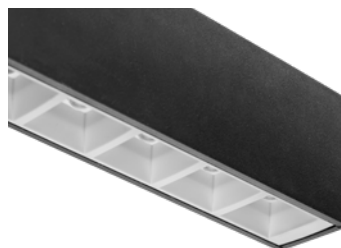
*Other CCT available on request



MILZO NUMBER 1 AVAILABLE IN SIX DIFFERENT SHADES



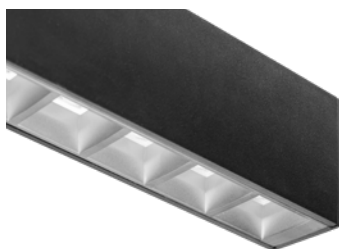
↘ White gloss



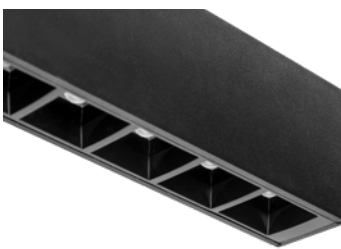
↘ White matt



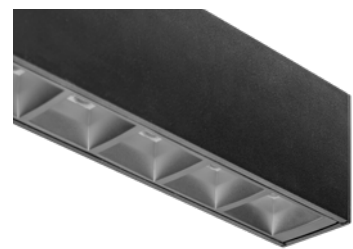
↘ Metal gloss



↘ Metal matt



↘ Black gloss



↘ Black matt

Milzo Number 2

RAL9005
 RAL9016
 RAL9006
 SANDED ALUMINIUM

Other colors on request



SUSPENDED



Body:	Aluminium profile
Dimming:	DALI / Pull dimmer / Bluetooth / Non dimmable
Sensor:	PIR / PIR + Daylight
Power:	12 - 90 W
Voltage:	220 - 240V
Standard LED CRI:	>80 / >90 / >95
Sun-Mimic LED CRI:	>90 / >95
Color temperature:	3000 / 4000 / TW 2700 - 6500 K*
Lifetime:	100 000 h (L80B10) at Ta = 25 °C 50 000 h (L90B10) at Ta = 25 °C
Temperature °C:	+10 to +35
Warranty:	5 years
Optics:	PMMA optic / PC shade
Uplight/Downlight:	Opal / Microprismatic / Symmetric / Asymmetric
Mounting:	Surface / Suspended / On Rod
Human Centric Lighting:	Available

*Other CCT available on request

ADDITIONAL MILZO NUMBER 2 MOUNTING

WITH ROD SUSPENSION



SURFACE



RECESSED

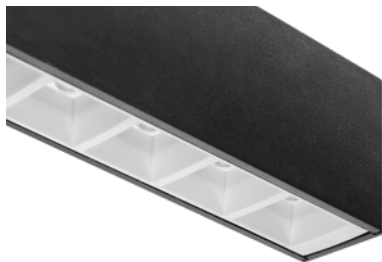


Body:	Aluminium profile
Dimming:	DALI / Pull dimmer / Bluetooth / Non dimmable
Sensor:	PIR / PIR + Daylight
Power:	12 - 90 W
Voltage:	220 - 240V
Standard LED CRI:	>80 / >90 / >95
Sun-Mimic LED CRI:	>90 / >95
Color temperature:	3000 / 4000 / TW 2700 - 6500 K*
Lifetime:	100 000 h (L80B10) at Ta = 25 °C 50 000 h (L90B10) at Ta = 25 °C
Temperature °C:	+10 to +35
Warranty:	5 years
Optics:	PMMA optic / PC shade
Uplight/Downlight:	Opal / Microprismatic / Symmetric / Asymmetric
Mounting:	Recessed
Human Centric Lighting:	Available

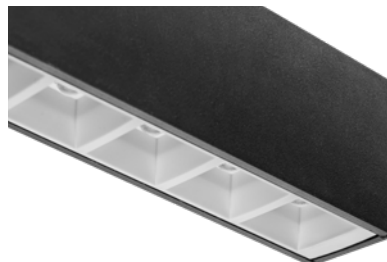
*Other CCT available on request



MILZO NUMBER 2 AVAILABLE IN SIX DIFFERENT SHADES



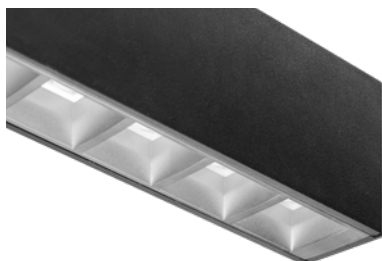
White gloss



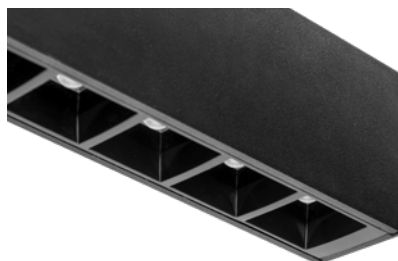
White matt



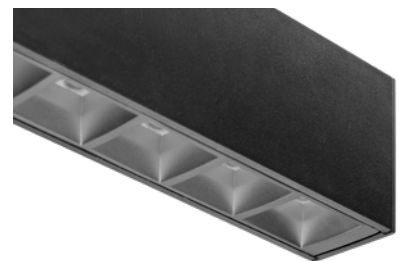
Metal gloss



Metal matt



Black gloss



Black matt

Milzo Number 3

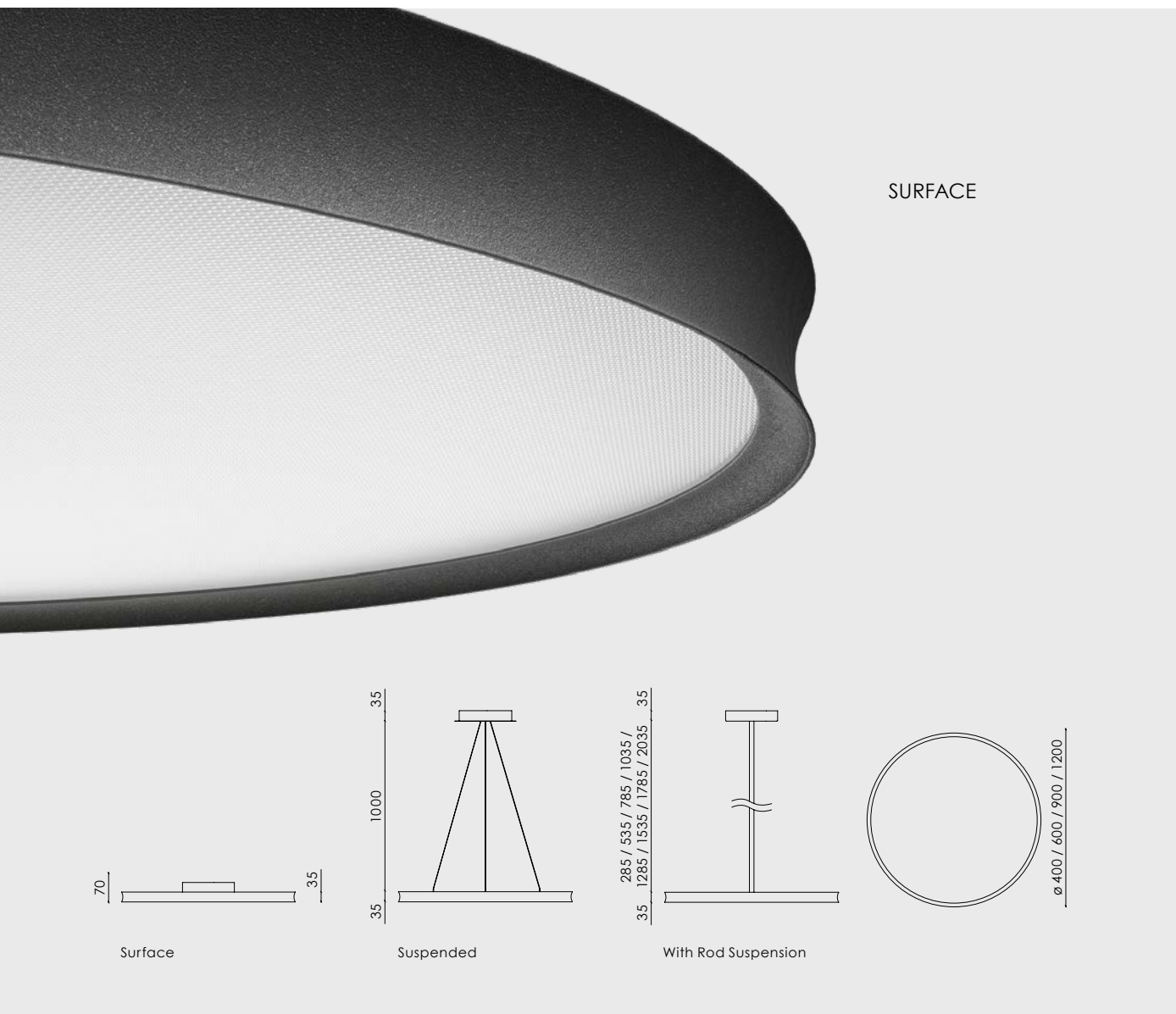


RAL9005 RAL9016 RAL9006 SANDED ALUMINIUM

Other colors on request

Body:	Aluminium profile, steel sheet
Dimming:	DALI / Pull dimmer / Bluetooth / Non dimmable
Sensor:	PIR + Daylight
Power:	20 - 100 W
Voltage:	220 - 240V
Standard LED CRI:	>80 / >90 / >95
Sun-Mimic LED CRI:	>90 / >95
Color temperature:	3000 / 4000 / TW 2700 - 6500 K*
Lifetime:	100 000 h (L80B10) at Ta = 25 °C 50 000 h (L90B10) at Ta = 25 °C
Temperature °C:	+10 to +35
Warranty:	5 years
Mounting:	Surface / Suspended / On Rod
Downlight/uplight:	Opal / Microprismatic
Human Centric Lighting:	Available

*Other CCT available on request



WITH ROD SUSPENSION



SUSPENDED

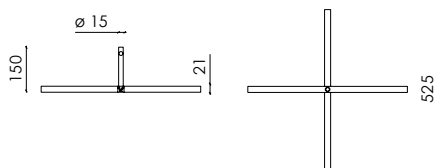


No Rules



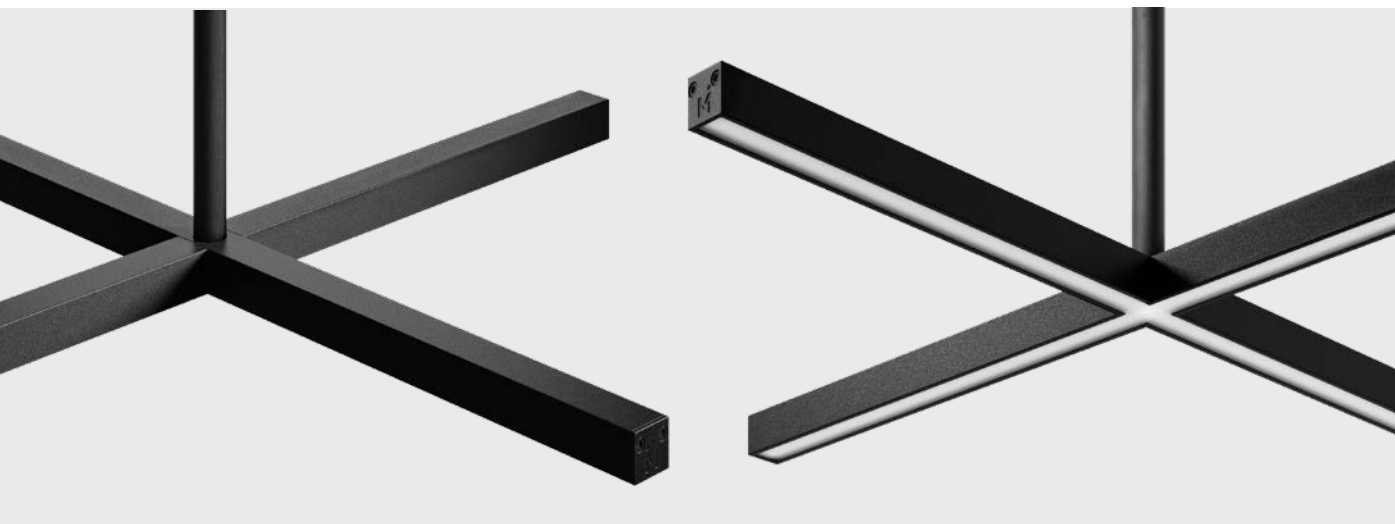
RAL9005
RAL9016
RAL9006
SANDER
ALUMINIUM

Other colors on request



Body:	Aluminium
Dimming:	DALI / Non dimmable
Power:	7 - 40 W
Voltage:	220 - 240 V
Standard LED CRI:	>80 / >90 / >95
Sun-Mimic LED CRI:	>90 / >95
Color temperature:	3000 / 4000 / TW 2700 - 6500 K*
Lifetime:	100 000 h (L80B10) at Ta = 25 °C 50 000 h (L90B10) at Ta = 25 °C
Temperature °C:	+10 to +35
Warranty:	5 years
Mounting:	On Rod
Cover:	Microprismatic
Human Centric Lighting:	Available

*Other CCT available on request



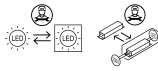
Straw



IP40

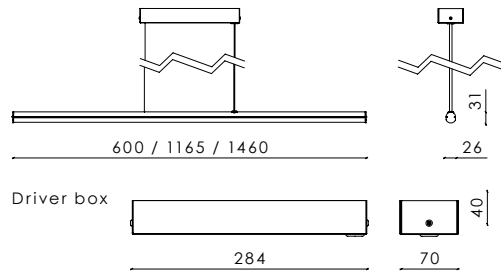


RoHS



RAL9005 RAL9016 RAL9006

Other colors on request



Body:	Aluminium profile
Dimming:	DALI / Non dimmable
Power:	8 - 30 W
Voltage:	220 - 240 V
Standard LED CRI:	>80 / >90 / >95
Sun-Mimic LED CRI:	>90 / >95
Color temperature:	3000 / 4000 / TW 2700 - 6500 K*
Lifetime:	100 000 h (L80B10) at Ta = 25 °C 50 000 h (L90B10) at Ta = 25 °C
Temperature °C:	+10 to +35
Warranty:	5 years
Mounting:	Pendant
Cover:	Opal
Human Centric Lighting:	Available

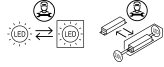
*Other CCT available on request



Pine



SundaHus
assessment
available



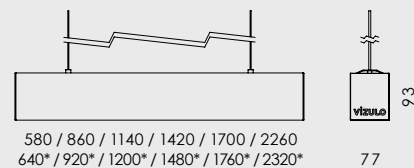
RAL9005 RAL9016 RAL9006 SANDED
ALUMINIUM

Other colors on request

Body:	Aluminium profile
Dimming:	DALI / Pull dimmer / Bluetooth / Non dimmable
Sensor:	PIR / PIR + Daylight
Power:	12 - 80 W
Voltage:	220 - 240V
Standard LED CRI:	>80 / >90 / >95
Sun-Mimic LED CRI:	>90 / >95
Color temperature:	3000 / 4000 / TW 2700 - 6500 K*
Lifetime:	100 000 h (L80B10) at Ta = 25 °C 50 000 h (L90B10) at Ta = 25 °C
Temperature °C:	+10 to +35
Warranty:	5 years
Optics:	Symmetrical / Asymmetrical
Uplight/Downlight:	Opal / Microprismatic
Mounting:	Surface / Suspended / On Rod
Human Centric Lighting:	Available

*Other CCT available on request

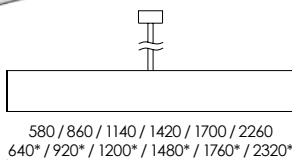
SUSPENDED



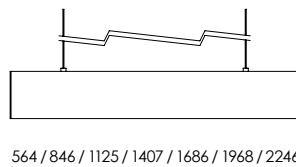
* With sensor + pull dimmer

ADDITIONAL PINE MOUNTING

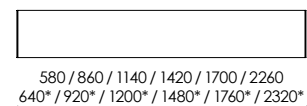
WITH ROD SUSPENSION



CONNECT



SURFACE

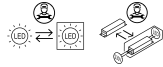


* With sensor + pull dimmer

Sunflower



SundaHus
assessment
available

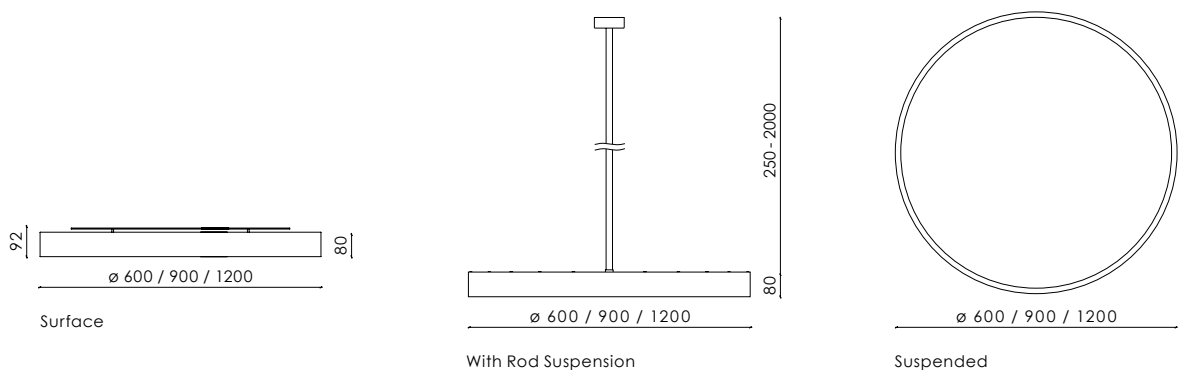


RAL9005 RAL9016 RAL9006 SANDED
ALUMINIUM

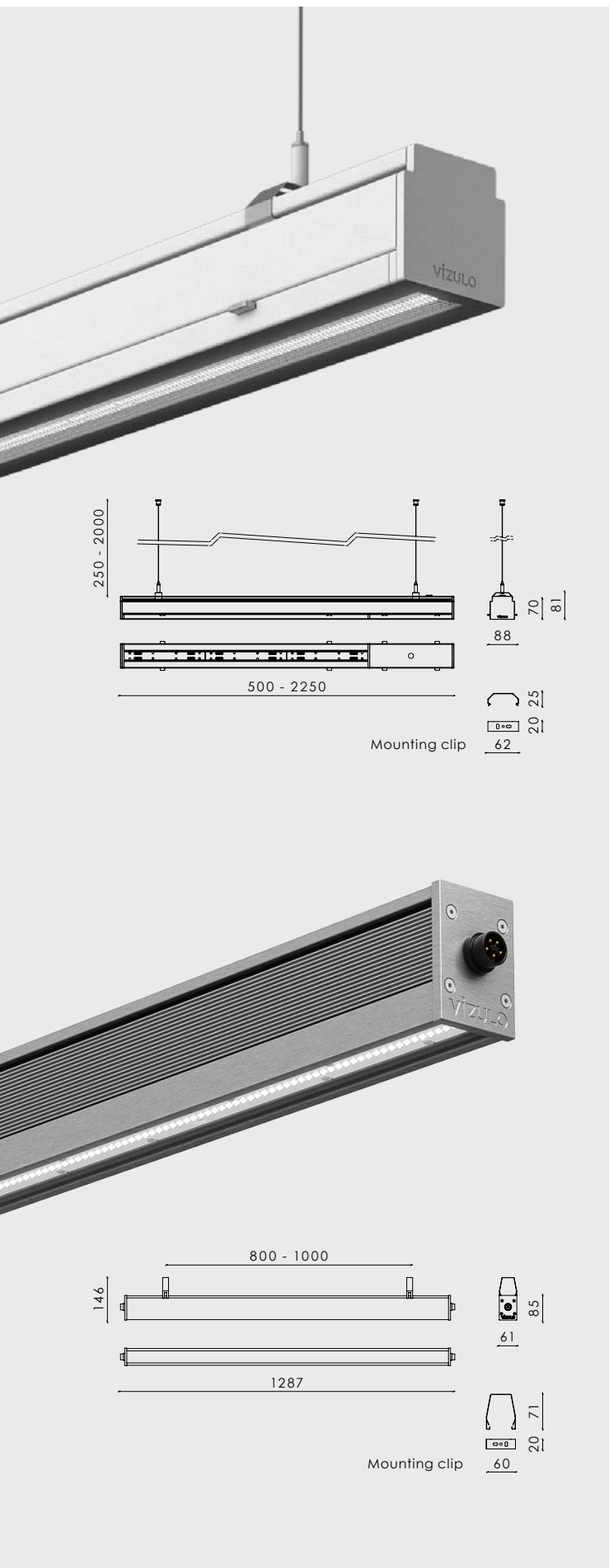
Other colors on request

Body:	Aluminium profile, steel sheet
Dimming:	DALI / Pull dimmer / Bluetooth / Non dimmable
Sensor:	PIR + Daylight
Power:	20 - 100 W
Voltage:	220 - 240V
Standard LED CRI:	>80 / >90 / >95
Sun-Mimic LED CRI:	>90 / >95
Color temperature:	3000 / 4000 / TW 2700 - 6500 K*
Lifetime:	100 000 h (L80B10) at Ta = 25 °C 50 000 h (L90B10) at Ta = 25 °C
Temperature °C:	+10 to +35
Warranty:	5 years
Uplight/Downlight:	Opal / Microprismatic
Mounting:	Surface / Suspended / On Rod
HumanCentric Lighting:	Available

*Other CCT available on request



Industrial



BAMBOO



RAL9005 RAL9016 RAL9006

Body:	Zinc-Polyester steel
Dimming:	DALI / Non dimmable / Bluetooth
Sensor:	PIR + Daylight
Power:	10 - 135 W
Voltage:	220 - 240V
Standard LED CRI:	>80 / >90 / >95
Sun-Mimic LED CRI:	>90 / >95
Color temperature:	3000 / 4000 / TW 2700 - 6500 K*
Lifetime:	50 000 h (L90B10) at Ta = 25 °C 100 000 h (L80B10) at Ta = 25 °C
Temperature °C:	-40 to +50
Warranty:	5 years
Mounting:	Surface / Pendant / Wall
Cover:	Linear micro-prismatic
Human Centric Lighting:	Available

*Other CCT available on request

MINT



SILVER-ANODIZED

Body:	Aluminium profile
Dimming:	DALI / Non dimmable / Bluetooth
Power:	100 - 250 W
Voltage:	198 - 264V
Spectrum:	Fixed / Tunable
Lifetime:	50 000 h (L90B10) at Ta = 25 °C
Temperature °C:	0 to +40
Warranty:	5 years
Mounting:	On Profile / Surface / Pendant
Cover:	Tempered glass

OAK Gen2



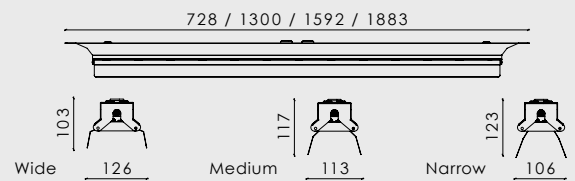
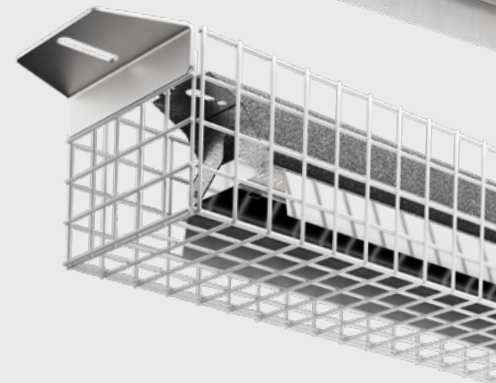
SILVER-ANODIZED

Body:	Alu-zinc
Dimming:	DALI / Non dimmable / Bluetooth
Sensor:	Microwave / PIR / PIR + Daylight
Power:	15 - 110 W
Voltage:	220 - 240V
Standard LED CRI:	>80 / >90 / >95
Sun-Mimic LED CRI:	>90 / >95
Color temperature:	3000 / 4000 K
Lifetime:	50 000 h (L90B10) at Ta = 25 °C 100 000 h (L80B10) at Ta = 25 °C
Temperature °C:	+10 to +50 (15 - 75 W version) +10 to +35 (76 - 110 W version)
Warranty:	5 years
Mounting:	Wire / Surface / Pendant
Cover:	Clear
Human Centric Lighting:	Available

*Other CCT available on request

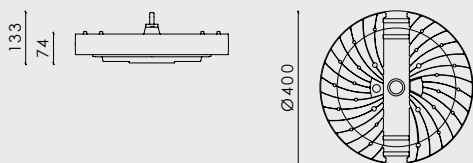


Mesh is available as an option



➤
Oak,
Grann garden,
Sweden

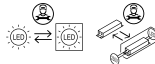
Industrial



ACORN



SundaHus
assessment
available



RAL9005 RAL9016 RAL9006

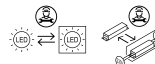
Body:	die-cast Aluminium profile
Dimming:	DALI / Non dimmable / Bluetooth
Sensor:	Microwave / PIR / PIR + Daylight
Power:	30 - 270 W
Voltage:	220 - 240V
Standard LED CRI:	>70 / >80 / >90
Color temperature:	3000 / 4000 / TW 2700 - 6500 K*
Lifetime:	100 000 h (L80B10) at Ta = 25 °C
Temperature °C:	-40 to +50 (50 - 200 W) -40 to +40 (201 - 270 W)
Warranty:	5 years
Mounting:	Pendant / High-bay / Cable / Floodlight
Optics:	Symmetrical / Asymmetrical
HumanCentric Lighting:	Available

*Other CCT available on request

FERN



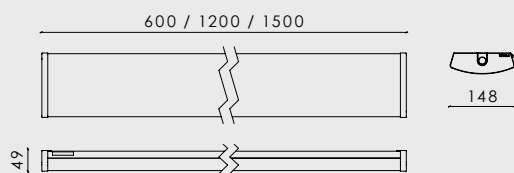
SundaHus
assessment
available



RAL9016

Body:	Alu-zinc
Dimming:	DALI / Non dimmable / Bluetooth
Sensor:	Microwave / PIR / PIR + Daylight
Power:	12 - 75 W
Voltage:	220 - 240V
Standard LED CRI:	>80 / >90 / >95
Sun-Mimic LED CRI:	>90 / >95
Color temperature:	3000 / 4000 / TW 2700 - 6500 K*
Lifetime:	50 000 h (L90B10) at Ta = 25 °C 100 000 h (L80B10) at Ta = 25 °C
Temperature °C:	+10 to +40
Warranty:	5 years
Mounting:	Surface / Wire / Pendant / Wall
Cover:	Prismatic PMMA
HumanCentric Lighting:	Available

*Other CCT available on request



STONE



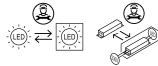
IP65/IP66/IP67

IK08

CE RoHS



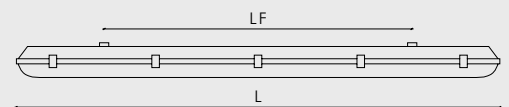
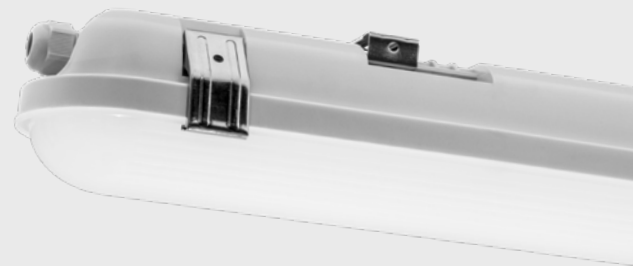
SundaHus
assessment
available



LIGHT GREY

Body:	Light grey polycarbonate (PC)
Dimming:	DALI / Non dimmable / Bluetooth
Sensor:	Microwave
Power:	10 - 45 W
Voltage:	220 - 240V
Standard LED CRI:	>80 / >90 / >95
Sun-Mimic LED CRI:	>90 / >95
Color temperature:	3000 / 4000 / TW 2700 - 6500 K*
Lifetime:	50 000 h (L90B10) at Ta = 25 °C 100 000 h (L80B10) at Ta = 25 °C
Temperature °C:	-40 to +35
Warranty:	5 years
Mounting:	Surface / Pendant
Cover:	Opal polycarbonate (PC)
HumanCentric Lighting:	Available

*Other CCT available on request



Dimension L x W x H	LF
600 x 93 x 82 mm	330 mm
1200 x 93 x 82 mm	850 mm
1500 x 93 x 82 mm	1000 mm



↘
Fern,
Västberga,
Sweden

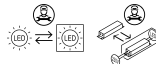
Wall and ceiling



DOVE



SundaHus
assessment
available

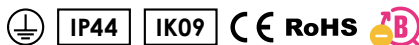


RAL9016

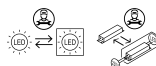
Body:	Aluminium profile
Dimming:	DALI / Non dimmable / Bluetooth
Sensor:	Microwave / PIR
Power:	8 - 21 W
Voltage:	220 - 240V
Standard LED CRI:	>80 / >90 / >95
Sun-Mimic LED CRI:	>90 / >95
Color temperature:	3000 / 4000 / TW 2700 - 6500 K*
Lifetime:	100 000 h (L80B10) at Ta = 25 °C 50 000 h (L90B10) at Ta = 25 °C
Temperature °C:	+10 to +45
Warranty:	5 years
Cover:	Opal
Mounting:	Surface
Human Centric Lighting:	Available

*Other CCT available on request

SHELL



SundaHus
assessment
available



RAL9016

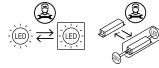
Body:	Steel
Dimming:	DALI / Non dimmable / Bluetooth
Sensor:	Microwave
Power:	7 - 28 W
Voltage:	220 - 240V
Standard LED CRI:	>80 / >90 / >95
Sun-Mimic LED CRI:	>90 / >95
Color temperature:	3000 / 4000 K*
Lifetime:	100 000 h (L80B10) at Ta = 25 °C 50 000 h (L90B10) at Ta = 25 °C
Temperature °C:	+10 to +35
Warranty:	5 years
Cover:	Opal
Mounting:	Surface

*Other CCT available on request

LEAF SLIM



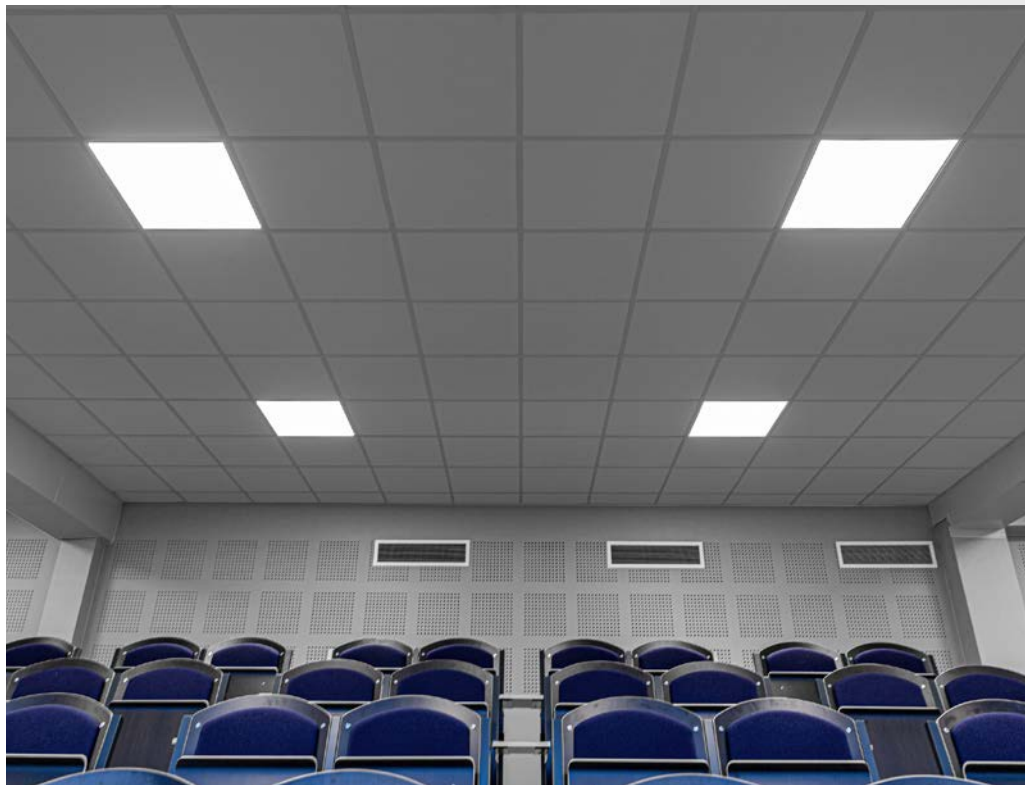
SundaHus
assessment
available



RAL9016

Body:	Aluminium profile
Dimming:	DALI / Non dimmable / Bluetooth
Sensor:	Microwave
Power:	15 - 45 W
Voltage:	220 - 240V
Standard LED CRI:	>80 / >90
Sun-Mimic LED CRI:	>90 / >95
Color temperature:	3000 / 4000 / TW 2700 - 6500 K*
Lifetime:	100 000 h (L80B10) at Ta = 25 °C 50 000 h (L90B10) at Ta = 25 °C
Temperature °C:	+10 to +40
Warranty:	5 years
Cover:	Microprismatic / Opal
Mounting:	Recessed / Surface / Pendant
Human Centric Lighting:	Available

*Other CCT available on request



Leaf Slim,
Aby Arena,
Sweden



Bukultu street 11
Riga, LV – 1005, Latvia

Sales: + 371 67 383 023
Production: + 371 67 383 024

sales@vizulo.com
www.vizulo.com



vizulo