

vizulo



Dove

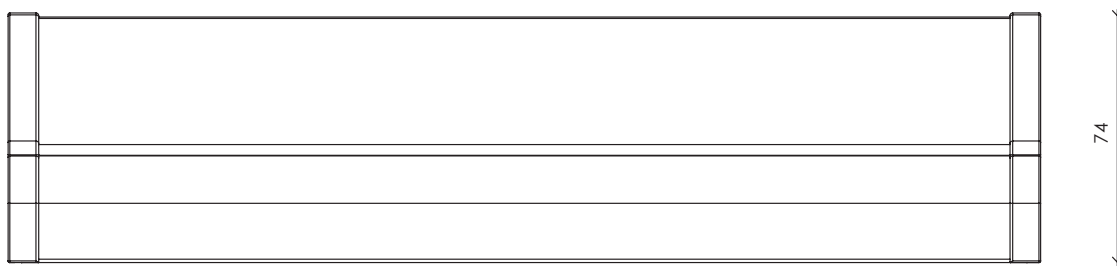


# Dove

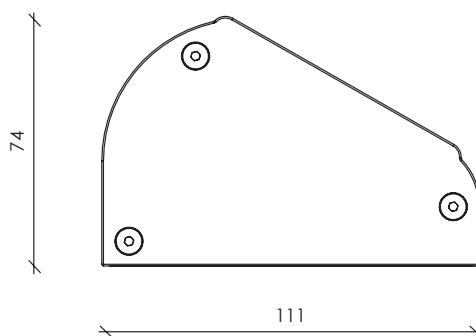


RAL9016

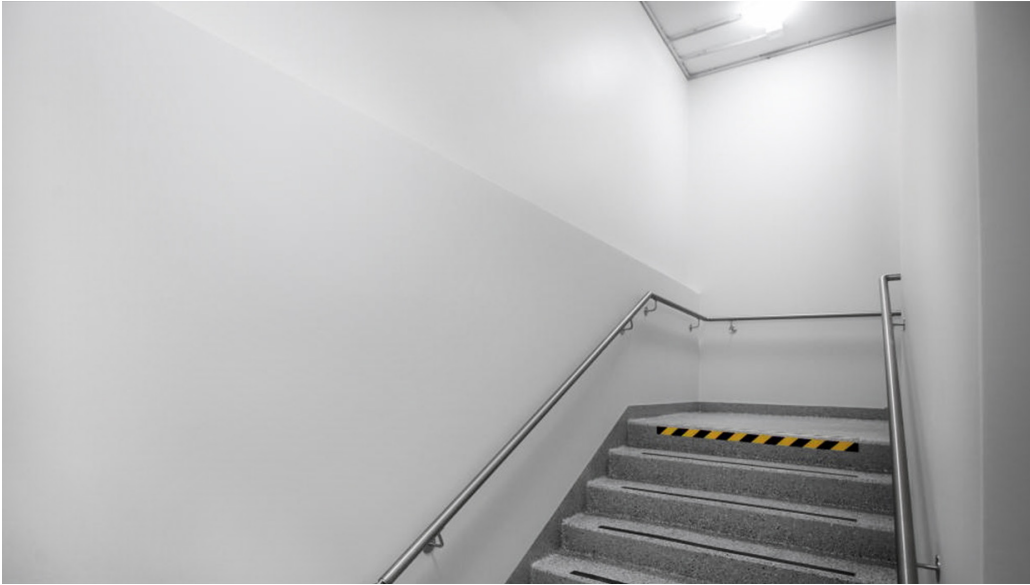
Other colors  
available on request



320 / 600 / 880 / 1160 - dimensions without sensor  
 405 / 685 / 965 / 1245 - dimensions with sensor



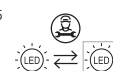
# Applications



▾ Basements



▾ Bathrooms



<b>V</b>	220 - 240	<b>Body:</b>	Aluminium profile
<b>Hz</b>	50 - 60	<b>Dimming:</b>	DALI / Bluetooth / Non dimmable
<b>W</b>	8 - 21	<b>Sensor:</b>	Microwave / PIR
<b>lm</b>	615 - 2105 <sup>(1)</sup>	<b>Initial chromaticity:</b>	MacAdam 3
<b>lm/W</b>	88 - 105	<b>Lifetime:</b>	100 000 h (L80B10) at Ta = 25 °C*
<b>K</b>	3000 / 4000 / TW 2700 - 6500 K <sup>(2)</sup>		50 000 h (L90B10) at Ta = 25 °C*
<b>°C</b>	+10 to +45	<b>Warranty:</b>	5 years
<b>CRI</b>	>80 / >90 / >95 <sup>(3)</sup>		2 years (emergency configuration)
	>90 / >95 <sup>(4)</sup>	<b>Cover:</b>	Opal
		<b>Mounting:</b>	Surface
		<b>Human Centric</b>	
		<b>Lighting:</b>	Available
		<b>Neto weight:</b>	Up to 1.73 kg

<sup>1)</sup> Lumen output indicated at CRI > 70

<sup>2)</sup> 1800 / 2200 / 2700 / 3500 / 5000 / 5700 / 6500 K available on request along with other not listed CRI and CCT

<sup>3)</sup> Standard LED CRI

<sup>4)</sup> Sun-Mimic LED CRI

<sup>5)</sup> Check SundaHus web page for product assessment results

\*This value is only informative and may change according to selected article. LED Lifetime is strongly depending from LEDs current and junction temperature – increase in LED current and luminaire power lead to increase of junction temperature and as consequence lifetime decrease. Thus, luminaire models with lower power, lower current (and lower junction temperature) will have higher lifetime than standard models. And high power and high current luminaire models may have negative lifetime deviation comparing to standard models. To receive precise value please contact VIZULO export representatives.

Technical parameters for final product can differ from typical data by 7% due to special conditions of LED manufacturing processes.

## DOVE Length table

### Non dimmable

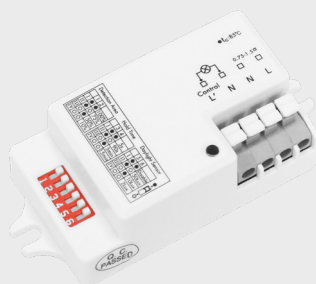
Length, mm	320	405	600	685	880	965	1160	1245
Power, W	13	14	10 - 20	11 - 21	14 - 20	15 - 21	18	19
Sensor	-	Yes	-	Yes	-	Yes	-	Yes
EM, hour	-	-	1	-	1 - 3	-	1 - 3	-

### DALI

Length, mm	600	685	880	965	1160	1245
Power, W	10 - 20	10 - 20	14 - 20	15 - 21	15 - 21	16 - 21
Sensor	-	Yes	-	Yes	-	Yes
EM, hour	-	-	1 - 3	-	1 - 3	-

# Sensors

## Microwave sensor



Power Source:	220 – 240 VAC (50/60 Hz)
Rated load:	400 W
Stand-by power:	<0.5 W
Sensitivity:	10% / 50% / 75% / 100%
Hold-time:	5 s / 90 s / 5 min / 15 min *
Daylight sensor:	2 lux / 10 lux / 50 lux, disable *
Microwave frequency:	5.8 GHz +/- 75 MHz
Detection range (diameter):	10 m *
Installing Height (Max):	6 m *
Detection angle:	30° ~ 150° *
Working temperature:	-20 °C ~ 60 °C
IP rating:	IP20
Certificates:	Semko, CB, CE, RCM, RoHS, RED

## PIR sensor



Power Source:	110-130 VAC or 220-240 VAC
Rated load:	200 W
Time setting:	5 s, 30 s, 1 min, 3 min, 5 min, 8 min (Adjustable)
Detection range (Max):	8 m
Detection angle (Max):	100°
Light control:	< 10-2000 lux (Adjustable)
Relative humidity:	<93% RH
Detection moving speed:	0.6 ~ 1.5 m/s
Working temperature:	-10 ~ +40 °C
Certificates:	CE, RoHS, EMC

\* Other values available on demand, contact us for more information!

# Exploring Dove

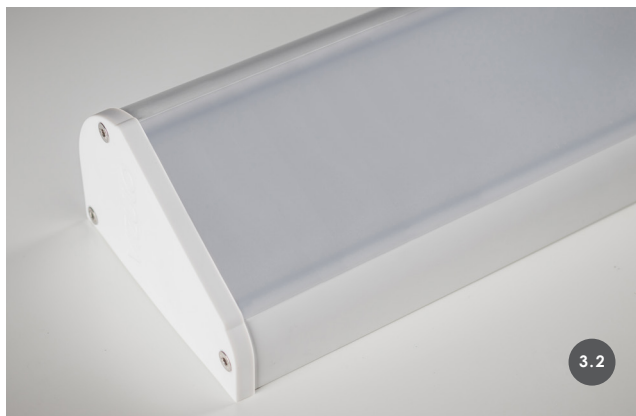
Silicone gasketing to ensure IP44



Easy surface mounting



Dove with microwave motion sensor

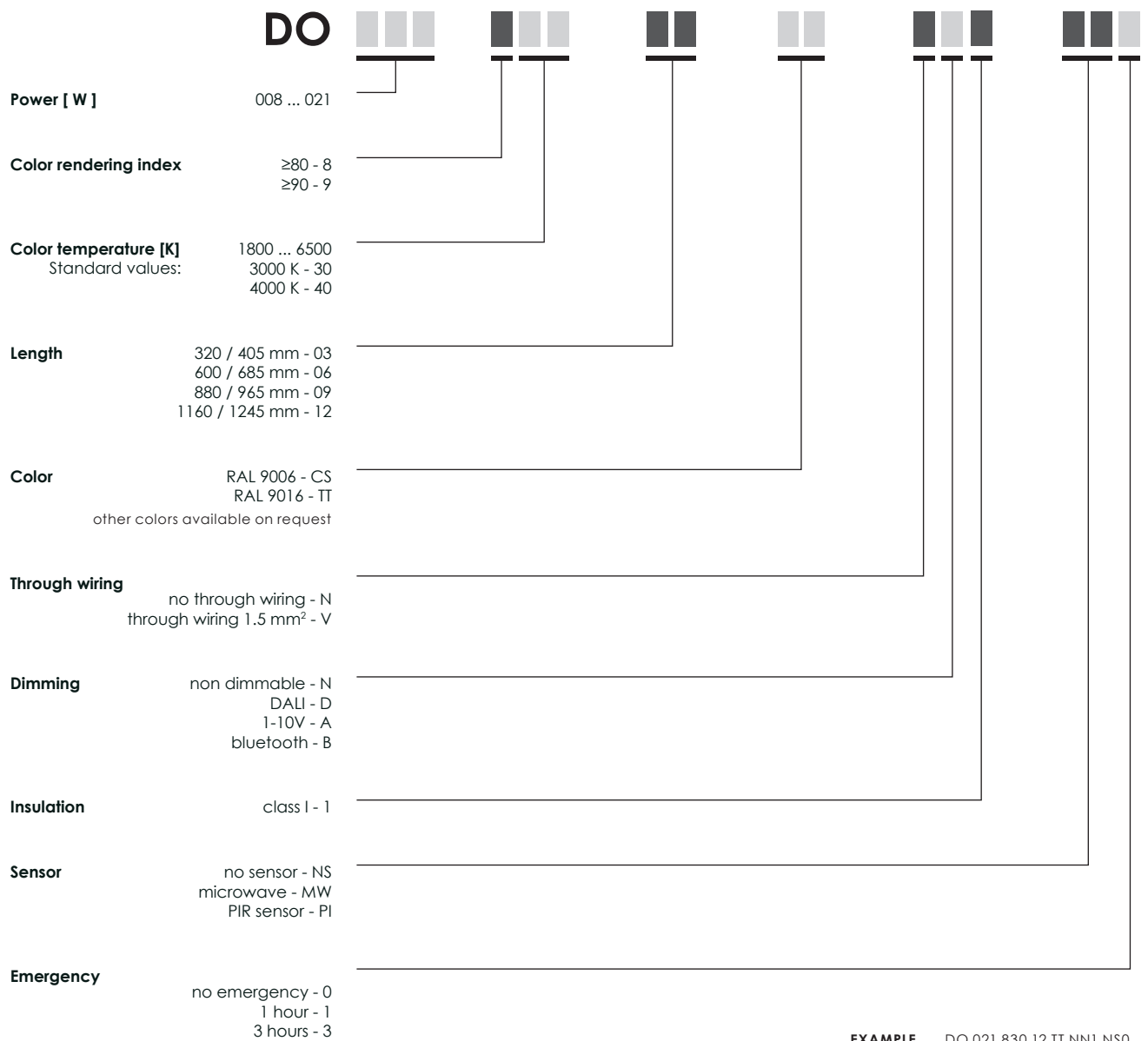


Dove with PIR motion sensor

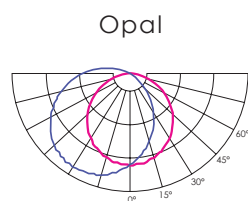




## Model name principles



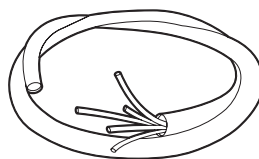
## Optics



# Accessories

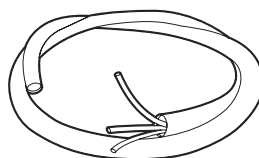
Connection cable 5x1.5 mm<sup>2</sup>  
(x2.5 m) with open end

Art. 70042016



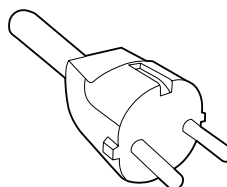
Connection cable 3x1.5 mm<sup>2</sup>  
(x2.5 m) with open end

Art. 70042018



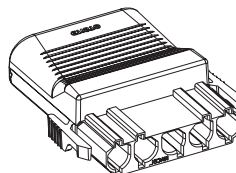
Connection cable 3x1.5 mm<sup>2</sup>  
(x2.5 m) with plug

Art. 70042022



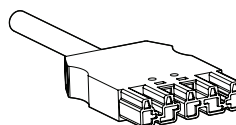
Connection cable 5x1.5 mm<sup>2</sup>  
(x2.5 m) with Ensto (NAC51S.W)  
5-way plug

Art. 70042009



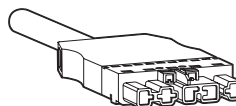
Connection cable 5x1.5 mm<sup>2</sup> (x2.5 m)  
with Wago Winsta (770-1115) 5-way plug

Art. 70042007



Connection cable with DALI 5x1.5 mm<sup>2</sup>  
(x2.5 m) with Wago Winsta(770-1115)  
5-way plug

Art. 70042030



# Certification



**CE** – conformity with European Union's health, safety and environmental protection standards

The CE mark is placed on products to state conformity with the relevant EU health, safety and environmental protection standards. In case of electronic products, the standards are, for example, the Restriction of Hazardous Substances in Electrical and Electronic Equipment (RoHS) directive, Waste Electrical and Electronic Equipment (WEEE) directive, the Electromagnetic Compatibility (EMC) directive etc. The mark ensures that the product can be sold anywhere in the European Economic Area (EEA).

## RoHS

**RoHS** – compliance with European Union's RoHS directive

The RoHS (Restriction of Hazardous Substances in Electrical and Electronic Equipment) directive restricts (with exceptions) the use of ten hazardous materials in the manufacture of various types of electronic and electrical equipment. The aim of the directive is to prevent the risks posed to human health and the environment related to the management of electronic and electrical waste.



**Bygghälsöbyggnad** – product chemical content and life cycle assessment

Bygghälsöbyggnad is a non-profit organization owned by large constructors and property owners in Sweden. The organization conducts assessments of various construction products based on chemical content and sustainability criteria. The constituent substances and product life cycle are evaluated and the product is assigned one of three levels:



Recommended  
(green)



Accepted  
(yellow)



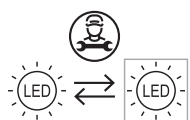
To be avoided  
(red)

*Note: the Recommended level assessment is unavailable for electronic products since it is assumed that all electronic products contain brominated flame retardants.*



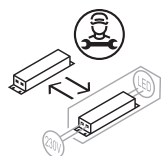
SundaHus i Linköping AB (publ) is a consulting company for the improvement of indoor environmental quality. The company conducts health and environmental assessments of building materials and assigns each product a letter evaluation:

- A** products that provide minimal health risks
- B** products that do not qualify for A, but do not match the criteria for C+, C- or D
- C+** products that risk exposure to substances of very high concern
- C-** products that risk exposure to toxic or volatile substances, as well as negatively impact the environment
- D** products that cannot be assessed due to insufficient data



### **LED module replaceable by a professional**

This pictogram shows that the LED modules included in the luminaire are only replaceable by a professional. This labeling is a requirement following the introduction of European Union's Regulation on energy labelling for light sources (EU) 2019/2015.



### **LED driver replaceable by a professional**

This pictogram shows that the LED driver included in the luminaire is only replaceable by a professional. This labeling is a requirement following the introduction of European Union's Regulation on energy labelling for light sources (EU) 2019/2015.



## VIZULO

Bukultu street 11  
Rīga, LV – 1005, Latvia

Sales: + 371 67 383 023  
Production: + 371 67 383 024

[sales@vizulo.com](mailto:sales@vizulo.com)  
[www.vizulo.com](http://www.vizulo.com)



VIZULO



VIZULOSOLUTIONS